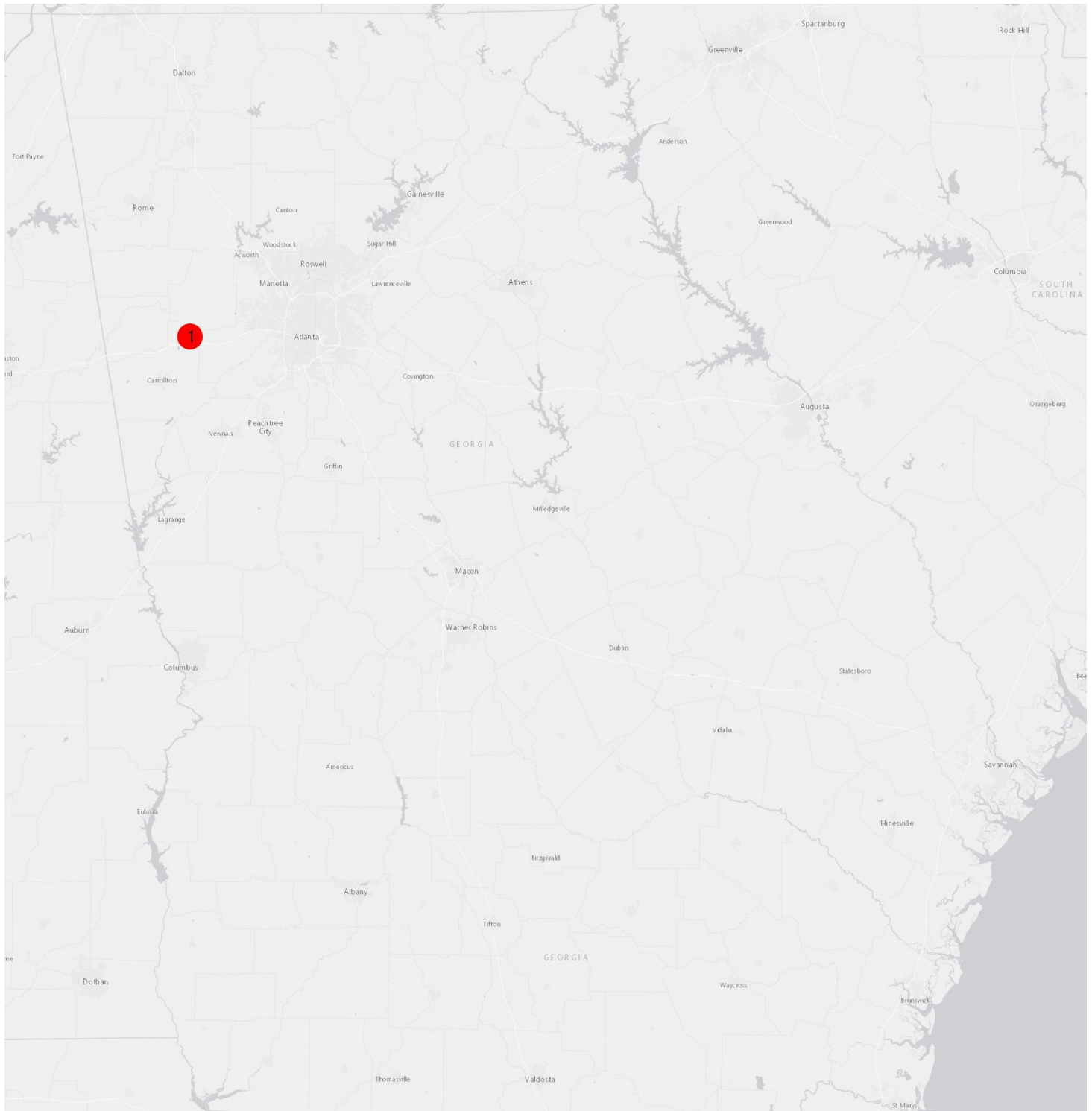


Properties Map



1 Villa Rica Industrial Park West

Villa Rica Industrial Park West

Villa Rica, GA 30180
Carroll County

Contact

Carroll Tomorrow/Chamber of Commerce
J.R. Charles, VP of Economic Development
200 Northside Drive, Carrollton, GA 30117
678-890-2354
jr@carroll-ga.org

Property

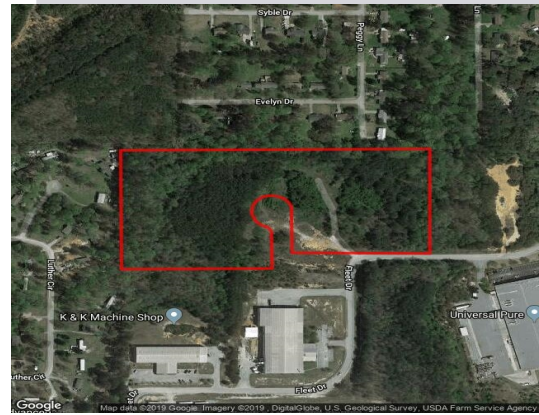
Largest Tract: 15
Remaining Acres: 15
Total Acres: 15
Sale or Lease:
GRAD Site: No
Zoning: Industrial Park

Workforce

County Laborforce:¹ 55,640
County Average Weekly Wage: \$813
County Unemployment Rate: 3.3%

Incentives

Jobs Tax Credit: \$1750 / job
Investment Tax Credit: 1%
City Freeport Category 1,2,3,4: 100%,100%,100%,0%
County Freeport Category 1,2,3,4: 100%,100%,100%,0%
Opportunity Zone: No
Federal Opp. Zone: No
Less Developed Census Tract: No
Military Zone: No
Foreign Trade Zone: No



Utilities

Water On Site: Yes
Water Main Size: 12 inches
Sewer On Site: Yes
Sewer Main Size: 16 inches
Gas On Site: Yes
Gas Main Size: 4 inches
Electric Provider: Georgia Power

Taxes

Effective Property Tax: \$10.5 per thousand dollars FMV
Millage Rate: 26.26
Sales Tax: 7%

Transportation

Nearest International Airport: Hartsfield-Jackson Atlanta International, 30.7 miles
Nearest Interstate: I-20, 0.7 miles
Nearest Port 1: Port of Savannah, 247.9 miles
Nearest Port 2: Port of Brunswick, 268.6 miles
Nearest Intermodal: Whitaker Rail Yard, 17.1 miles
Rail Served: No
Rail Provider:

¹ Monthly workforce data from the Georgia Department of Labor

Villa Rica Industrial Park West

Drive Time: 45 minute radius

Population Summary	
2010 Total Population	1,026,468
2018 Total Population	1,126,400
2023 Total Population	1,197,825
2017-2022 Annual Rate	1.24%
2018 Total Daytime Population	1,083,777
Workers	491,376
Residents	592,401
2018 Population by Race/Ethnicity	
Total	1,126,401
White Alone	47.4%
Black Alone	44.4%
American Indian Alone	0.3%
Asian Alone	1.7%
Pacific Islander Alone	0.0%
Some Other Race Alone	3.5%
Two or More Races	2.6%
Hispanic Origin	7.7%
Diversity Index	63.8
2018 Population 25+ by Educational Attainment	
Total	740,713
Less than 9th Grade	4.2%
9th - 12th Grade, No Diploma	8.3%
High School Graduate	23.6%
GED/Alternative Credential	5.0%
Some College, No Degree	21.4%
Associate Degree	7.2%
Bachelor's Degree	18.7%
Graduate/Professional Degree	11.6%
2018 Workforce and Employed Population 16+ by Industry	
2018 Civilian Population Age 16+ in Labor Force (Esri)	574,552
2018 Unemployed Population Age 16+ (Esri)	32,658
Total Employed	541,895
Agriculture/Mining	0.4%
Construction	7.3%
Manufacturing	8.9%
Wholesale Trade	3.3%
Retail Trade	11.7%
Transportation/Utilities	7.9%
Information	2.4%
Finance/Insurance/Real Estate	6.1%
Services	47.5%
Public Administration	4.6%
Median Household Income	
2018 Median Household Income	\$55,621
2023 Median Household Income	\$60,491
2017-2022 Annual Rate	1.69%
Median Age	
2010	34.8
2018	36.1
2023	36.7
Median Home Value	
2018	\$181,827
2023	\$213,351

Sources: ESRI, U.S. Census

Georgia Power Community & Economic Development | 75 Fifth Street NW, Suite 150 | Atlanta, GA 30308 | www.SelectGeorgia.com

This information is provided "as is" without warranty of any kind either express or implied. @2018