

# Thomasson Printing

940 Columbia Drive , Carrollton, GA 30117



## **BUILDING SPECIFICATIONS:**

**CONSTRUCTION MATERIAL:** Metal

**TOTAL SIZE:** 57,800 SF

**OFFICE AREA:** +/- 3,800 SF

**EXPANDABLE:** Yes

**BUILDING DIMENSIONS:** 200' x 300' (Approximately)

**CEILING HEIGHT:** 15'

**LOT SIZE:** 15.7 Acres

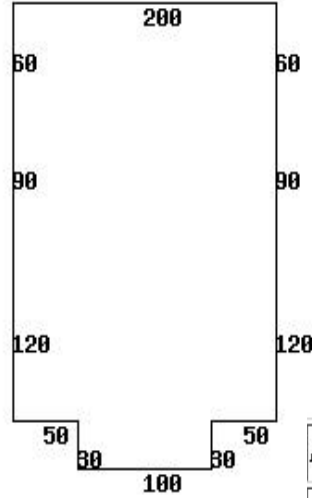
**YEAR BUILT:** 1985

**LAST YEAR IMPROVED:** 1996



# Thomasson Printing

940 Columbia Drive , Carrollton, GA 30117



Area Type Description	Square Feet
1.0	57000

## BUILDING SPECIFICATIONS:

**DOCK HIGH DOORS:** 5

**DRIVE-IN DOORS:** 1

**ZONING:** Industrial (West Georgia Industrial Park)

**WATER:** City of Carrollton - 8"

**SEWER:** City of Carrollton - 8"

**NATURAL GAS:** AGL - 6"

**ELECTRICITY:** EMC

**TELECOMMUNICATIONS:** Bell South

